

Bacterial Vaginosis Bacterial and Epithelial Cell Adhesion Molecules

Şayeste DEMİREZEN¹, Aydan MUTLU¹, M. Sinan BEKSAÇ²

Ankara, Turkey

Lactobacilli are member of normal vaginal flora. They maintain low pH of vaginal discharge by metabolising glycogen in vaginal epithelial cell and protects the vagina against the pathogenic microorganisms. However, the vaginal flora can be changed because of birth, taking antibiotics and contraceptive pills. Thus, whereas Lactobacilli population decreases, Gardnerella vaginalis and mixed anaerobic bacteria population increase and this situation causes an infection named Bacterial vaginosis. In this infection, the main diagnostic criteria are clue cells. The clue cell is a squamous epithelial cell which is covered by bacteria. First step of infection progress is adhesion of bacteria to epithelial cell through the adhesion molecules. The most important adhesion molecules of epithelium are cadherins, fibronectins, Toll like receptors and carbohydrates. In bacteria, pili, lipopolysaccharide and biofilm have primary importance. In this review, the adhesion molecules are discussed in detail and their roles in formation of clue cell are clarified.

Key Words: Bacterial vaginosis, Clue cell, Cadherin, Pili, Biofilm

Gynecol Obstet Reprod Med 2013;19:58-62

Introduction

Several studies show that Bacterial vaginosis is one of the most common vaginit type in women. This vaginit named bacterial vaginosis is because of anaerobic bacteria causing this vaginit type and although being vaginal discharge there is no inflammation and leucocyte.^{1,2} The most important bacteria that cause bacterial vaginosis is *Gardnerella vaginalis*. A lot of anaerobic bacteria such as *Mobiluncus* spp, *Bacteroides* spp., *Ureplasma urealyticum*, *Peptostreptococcus* spp, *Mycoplasma hominis*, *Fusobacterium*, *Atopobium vaginae*, *Prevotella bivia*, *Veillonella* spp., and *Peptoniphilus* spp., also cause this infection.^{3,4}

Clue cell which is prior microscopic finding of bacterial vaginosis was first named by Gardner and Dukes.⁵ (Figure 1) When *Lactobacilli* population decreases, servico-vaginal epithelial cells are covered by mixed anaerobic bacteria population and these cells become clue cells. *Lactobacillus* spp. maintains the vaginal discharge at 4 - 4.5 pH level by metabolizing glycogen in the vaginal epithelial cells and they pro-

tect the vaginal mucosa against the pathogenic microorganisms. In addition, they prevent the growing pathogenic bacteria by producing H₂O₂ and bacteriocin, but absence of *Lactobacillus* spp., mixed anaerobic bacteria population increases and this causes bacterial vaginosis.⁶ A recent study suggests that bacteriophages can determine increasing *Lactobacilli* population. These phages are first isolated in 1997. Finding the phages in men urogenital system also support that idea and they reported smoking reduces the induction of phages. Accordingly, they suggest phages can cause absence of *Lactobacilli* population by infecting them and the reason for this *G. vaginalis* and mixed anaerobic bacteria population increases.⁷ The other important diagnostic criteria are fishy odour, decreased *Lactobacilli* population, vaginal pH > 5 and absence of leucocyte.^{3,5}

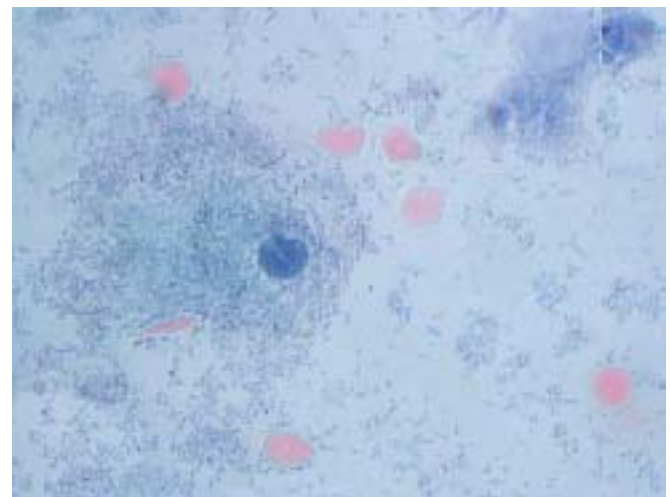


Figure 1: Squamous epithelial cell which is covered by mixed anaerobic bacteria. This cell is named clue cell.

¹Hacettepe University, Faculty of Natural & Applied Science Department of Biology, Ankara

² Hacettepe University, Faculty of Medicine, Department of Obstetrics and Gynecology, Ankara

Address of Correspondence: Şayeste Demirezen
Hacettepe University, Faculty of Natural & Applied Science Department of Biology, Beytepe, Ankara
sayeste@hacettepe.edu.tr

Submitted for Publication: 23. 10. 2012

Accepted for Publication: 19. 12. 2012

Bacterial vaginosis is also a serious disorder in pregnant women. Recent studies show that this vaginit causes several complications such as pelvic inflammatory disease (PID), abortus, preterm delivery, low weight delivery, postpartum endometritis, amnion fluid infection and early membrane rupture.^{3,7}

In this review, to understand this infection which cause a lot of serious disorder better, epithelial cell and bacterial adhesion molecules will be discussed in details. These molecules play an important role in formation of clue cell.

Epithelial Cell Adhesion Molecules

Human vagina and ectoservics are covered by stratified squamous epithelium. Stratification of this epithelium and tight junctions protect the epithelial cells against viral and bacterial microorganisms. Several adhesion molecules participate in tight junctions among epithelial cells and these molecules will be discussed in details.⁸

Cadherins

Cadherins are cell-cell adhesion molecules that belong to transmembrane protein family. They constitute about 10-15 subfamilies. E-cadherin (uvomorulin) is expressed in vaginal epithelial cells and it is a member of Type I cadherins. These proteins comprise three domains. There is an extracellular domain named amino-terminal domain, a transmembrane domain in cell membrane and carboxy-terminal domain in the cytosol (Figure 2).⁹ Amino-terminal domain is responsible for cell-cell adhesion. In this domain histidin, valin and alanin are involved in adhesion by making dimmers.¹⁰ Ca^{+2} is an essential molecule for adhesion because amino-terminal domain is activated by binding these molecules. In the absence of Ca^{+2} molecules E-cadherins are in active.^{9,11} Even the subfamily of cadherins have same structure, they can adhere different cells by changing aminoacid sequences in amino-terminal domains.¹¹

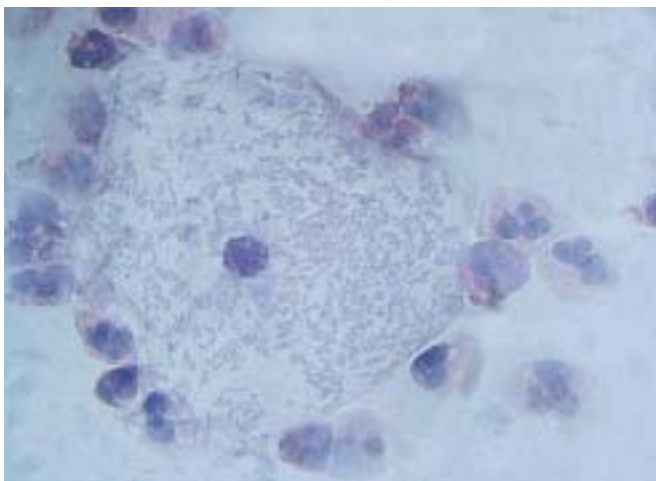


Figure 2: False clue cell. *Lactobacillus* spp. morphotype no gram negative or gram variable rods.

The carboxy-terminal domain binds catenins in cytosol. Catenins are intracellular binding proteins. These intracellular proteins bind actin myofilaments and they compose adhesion zone together.⁹

Adhesion zone are abundant in basal and parabasal cells. Therefore, tight junctions are like barriers which protect the stratified epithelium. However, some researchers suggest that as squamous epithelial cells mature, cadherins expression decrease because of pyknotic nucleus. Thus, they are exfoliated.^{9,12} Recent studies show that E-cadherin expression increases during inflammatory process whereas, in neoplastic processes it decreases.¹³

A research used in immunocytochemistry shows that *G. vaginalis* and *Bacterioides* spp. cause altered expression in E-cadherin. In this study, *G. vaginalis* makes cadherin and catenin expression increased but while cadherin expression undergoes down regulation because of *Bacterioides* spp., catenin expression undergoes upregulation. They suggested that immune response and increased cytokine molecules can cause these changes.¹⁴ Also it is suggested that cadherins can involve in formation of clue cell by recognising bacteria.

Carbohydrates

On the epithelial cell membrane surface, there are many carbohydrates attached to the perihebral and integral proteins. These carbohydrates serve as a receptor for many pathogenic bacteria. Bacteria adhere to epithelial cell by recognizing these molecules and they cause infection. Studies show that carbohydrates can involve in adhesion of *G. vaginalis* to epithelial cell. In a study, after treatment of clue cell with sodium-meta-periodate which destroys the C-C bond between hydroxyl groups of carbohydrates, adhesion of *G. vaginalis* to epithelial cell was inhibited. Thus, they suggested carbohydrates play a part in adhesion. However, findings were insufficient for determining which molecules is necessary for adhesion.¹⁵ On the other hand, after a couple of years N-acetyl-galactoseamine and D-galactoseamine receptors were found on *G. vaginalis* cell wall so it was suggested carbohydrates of epithelial cell can involve in adhesion by recognizing these receptors. Also they suggested that other mechanisms can take part in adhesion of *G. vaginalis* to epithelial cells.¹⁶

Toll Like Receptors

Toll gene was first described in drosophila and it is required for dorsal-ventral polarity in developing embryo. Some genetic researches show that a protein which homologue of the drosophila toll gene was identified in human so it was named toll like receptor (TLR). There are 10 members in TLR family.¹⁷

TLR4 is expressed in cervicovaginal epithelium. It activates several signal pathways by recognizing bacterial ly-

polysaccharide and it creates immune response. Hence, TLR is important for immunity.¹⁸ It has been demonstrated that TLR4 recognize lipopolysaccharide on *G. vaginalis* cell wall and it is responsible for increasing cytokine in epithelial cell.¹⁹ It is possible that during the formation of clue cell, TLR4 binds lipopolysaccharide on *G. vaginalis* cell wall.

Fibronectin

Fibronectin is an extracellular matrix protein. It involves in bacterial adhesion by binding epithelial cells. These proteins are high molecular weight glycoproteins.²⁰

Fibronectin is found soluble form in the body fluid and insoluble form in the extracellular matrix.²¹

These glycoproteins bind basal cells through integrins.²² Basal cells have mitotic activity and they are first cell line of stratified epithelium. *Lactobacillus* spp. adheres to vaginal epithelial cells by binding fibronectin. With this way, they cause false clue cell.⁶ (Figure 3)

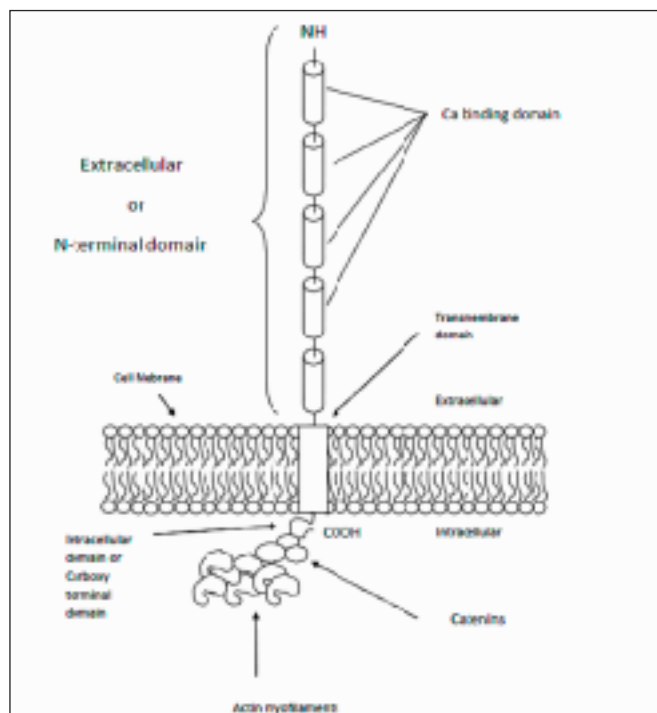


Figure 3: Cadherin structure. Ca^{+2} is important in adhesion. Catenins are bound actin myofilaments.

Bacterial Adhesion Molecules

Lypopolisaccharide

The cell envelope of Gram negative bacteria comprise three layers. These layers are cell membrane, periplasmic zone and outer membrane. Cell membrane has similar structure of biological membranes and it consists of lipid and proteins. In periplasmic space, there is a peptidoglycan layer. This layer is also named murein. Murein layer made of glycan strands con-

sisting N-acetylglucosamine and N-acetylmuramic acid. In Gram positive bacteria, murein layer is thicker. Outer membrane takes part in adhesion. Peptidoglycan layer and outer membrane form cell wall together.^{23,24} Outer membrane contains protein, phospholipid and as well as variable amounts of lipopolysaccharide (LPS). LPS is highly antigenic and it plays an important role in pathogenesis of Gram negative bacteria. This molecule is a chain and it contains carbohydrate. LPS extends towards outside from the outer membrane with carbohydrate chains. Head of this chain is named O - specific polysaccharide or O- antigens.^{25,26} Lipid A is lipid part of lipopolysaccharide. It is a ligand for TLR4 and creates an immune response in host cell by recognizing this receptor. Also, O antigens binds epithelial cell and involve in immune response.²⁷

Pili

To infect a cell, adhesion is an important step for pathogens and pili prior adhesion molecule for bacteria. Pili is a fibrous molecule.²⁸ Gram (-) bacteria and gram (+) bacteria have different pili type. In this review, we discuss pili of gram (-) bacteria, for the organisms involving in formation of clue cell have this pili type. Presence of pili was demonstrated with electron microscopy in *G. vaginalis* and *Bacteroides* spp.^{29,30} Studies show that *G. vaginalis* has Type I pili.³¹ At first, it was suggested that *G. vaginalis* can adhere vaginal epithelial cell through pili. After couple of years, this idea was confirmed and adhesion of *G. vaginalis* to epithelial cell was demonstrated with electron microscopy.³² Besides, type I pili is recognized by TLR4 and it causes increasing of inflammatory cytokine.³³

In addition to type I pili, gram (-) bacteria have curly pili, Type IV pili and trimeric ototransporter adhesions. Also, it is suggested that gram (-) bacteria have a lot of different pili types. Curly pili contains abundant starch, so they are very sticky. Trimeric ototransporter adhesions can adhere host cell or extracellular matrix protein. Adhesion mechanism of Type IV is still unknown.³³

Biofilm

Biofilm is a complex aggregation of microorganisms embedded within an extracellular polysaccharide (extracellular polymeric material) on a solid surface. Extracellular polysaccharide (EPS) consists of abundant carbohydrate. Besides this molecule, amino acids and water molecules are contained too. Furthermore, it was demonstrated that the major EPS of *E. coli* include colanic acid.^{34,35} Bacterial biofilms are associated with several recalcitrant infections such as endocarditis, periodontitis, pelvic inflammatory disease and bacterial vaginosis. Moreover, it can form on catheters, silicones, contact lenses, intra uterine device and surgical instruments.³⁶

Bacterial adhesion is first step of biofilm formation.

Bacteria adhere to solid surface through the pili.³⁵ Also, pili ensure conjugation of bacteria. During the conjugation bacteria undergo adaptation. Some of these adaptations are UV resistance, increased rates of genetic exchange and increased secondary metabolite production.³⁷ EPS is produced after getting signal named "quorum sensing". This signal means that bacteria reach enough population to form a biofilm. Acylhomoserin lactones are one of the quorum sensing molecules.³⁵ Activation of these molecules is still unknown.

The last step of biofilm formation is detachment of bacteria. Detachment signal is also mystery. However, it is suggested that insufficient food might be one of these signals.³⁸ Biofilm involves antibiotic resistance. It is believed that EPS prevents antimicrobial agents from reaching the bacteria.³⁸

It was stated that in bacterial vaginosis, *G. vaginalis* strains which are attached to squamous epithelial cells, can form biofilm.^{3,39} Studies show that during the infection, in this biofilm the predominant organism is *G. vaginalis*. Its concentration reaches up to 10¹¹ bacteria per millimeter.³ Another study shows that after standard therapy with metronidazole, bacterial biofilm was determined and it is suggested that biofilm formation is the cause of relapsing bacterial vaginosis.³⁹

Bakteriyel Vaginosis: Bakteri ve Epitel Hücre Adezyon Molekülleri

İnsan vajinal florasında yaşayan laktobasiller epitel hücrelerin glikojenini kullanarak ortam pH'sını 4-4,5 gibi asidik bir değerde tutmakta ve vajinal florayı çeşitli mikroorganizmalara karşı korumaktadırlar. Fakat doğum, antibiyotik ve doğum kontrol haplarının kullanımı gibi çeşitli nedenlerle floranın dengesi bozulmakta ve laktobasillerin sayısı azalmaktadır. Bu durumda da ortama başta *Gardnerella vaginalis* olmak üzere çeşitli anaerobik bakteriler hakim olmakta ve bakteriyel vajinozis dediğimiz enfeksiyon meydana gelmektedir. Bu enfeksiyonun en önemli tanı bulgusu da "clue cell" adını verdiğimiz üzeri bakterilerle kaplı skuamöz epitel hücrelerinin görülmesidir. Enfeksiyon oluşumunun ilk basamağını ise adezyon molekülleri ile bakterilerin epitel hücreye yapışması oluşturmaktadır. Bu basamakta da çeşitli adezyon molekülleri görev almaktadır. Epitel hücre zarındaki adezyon moleküllerinden en önemlileri kadehinler, fibronektinler, Toll benzeri reseptörler ve karbonhidratlardır. Bakterilerde en önemli adezyon molekülleri ise pili, bakteri hücre duvarı yapısında bulunan lipopolisakkarit ve biyo-filmidir. Bu derlemede adezyonda görev alan bu moleküllerin yapısına detaylı olarak değinilecek ve clue cell oluşum mekanizmasındaki rolleri açıklanacaktır.

Anahtar Kelimeler: Bakteriyel vajinozis, Clue cell, Cadherin, Pili, Biofilm

References

1. Chaim W, Mazor M, Leiberman JR, The relationship between bacterial vaginosis and preterm birth. A review,

Arch Gynecol Obstet 1997;259: 51-8

2. Blackwell A, Barlow D, Clinic diagnosis of anaerobic vaginosis (non-specific vaginitis). A practical guide. Br J Vener Dis 1982;58:387-93
3. Patterson JL, Stull-Lane A, Girerd PH, Jefferson KK, Analysis of adherence, biofilm formation and cytotoxicity suggests a greater virulence potential of *Gardnerella vaginalis* relative to other bacterial-vaginosis-associated anaerobes. Microbiology 2010;156:392-9
4. Srinivasan S, Fredricks DN, The human vaginal bacterial biota and bacterial vaginosis. Interdiscip Perspect Infect Dis 2008;2008:750479
5. Cook RL, Reid G, Pond DG, Schmitt CA, Sobel JD, Clue cells in bacterial vaginosis: immunofluorescent identification of the adherent gram-negative bacteria as *Gardnerella vaginalis*. J Infect Dis 1989;160:490-6
6. Tao L, Pavlova I S, Kiliç O A: Phages and Bacterial vaginosis in Waldor K W, Friedman I D, Adhya I S, Phages : Their Role in Bacterial Pathogenesis and Biotechnology, ASM Press. Washington D. C., pp: 2005;256-279
7. Nagy E, Fröman G, Mårdh PA, Fibronectin binding of *Lactobacillus* species isolated from women with and without bacterial vaginosis. J Med Microbiol 1992;37:38-42
8. Wira CR, Grant-Tschudy KS, Crane-Godreau MA, Epithelial cells in the female reproductive tract: a central role as sentinels of immune protection. Am J Reprod Immunol 2005;53:65-76
9. Wheelock MJ, Johnson KR, Cadherins as modulators of cellular phenotype. Annu Rev Cell Dev Biol 2003;19: 207-35
10. Takeichi M, Morphogenetic roles of classic cadherins. Curr Opin Cell Biol 1995;7:619-27
11. Elangbam CS, Qualls CW Jr, Dahlgren RR, Cell adhesion molecules-update. Vet Pathol 1997;34:61-73
12. Felix JC, Lonky NM, Tamura K, Yu KJ, Naidu Y, Lai CR, Lonky SA, Aberrant expression of E-cadherin in cervical intraepithelial neoplasia correlates with a false-negative Papanicolaou smear. Am J Obstet Gynecol 2002;186: 1308-14
13. Demetter P, Baeten D, De Keyser F, De Vos M, Van Damme N, Verbruggen G, Vermeulen S, Mareel M, Elewaut D, Mielants H, Veys EM, Cuvelier CA, Subclinical gut inflammation in spondyloarthritis patients is associated with upregulation of the E-cadherin/catenin complex. Ann Rheum Dis 2000;59:211-6
14. Poli EN, Lazaris AC, Kehriotis M, Papatomas TG, Nikolakopoulou E, Koutselini H, Altered expression of adhesion molecules in inflammatory cervical smears. Cytopathology 2008;19:172-8
15. Peeters M, Piot P, Adhesion of *Gardnerella vaginalis* to

- vaginal epithelial cells: variables affectig adhesion and inhibition by metronidazole. *Genitourin Med* 1985;61:391-5
16. Scott TG, Smyth CJ, Haemagglutination and tissue culture adhesion of *Gardnerella vaginalis*., *J Gen Microbiol* 1987;133:1999-2005
 17. Takeda K, Kaisho T, Akira S, Toll-Like Receptors. *Annu Rev Immunol* 2003; 21: 335-76
 18. Lien E, Ingalls RR, Toll-like receptors. *Crit Care Med* 2002;30 (1 Supp): S1-S11
 19. Genc MR, Vardhana S, Delaney ML, Onderdonk A, Tuomala R, Norwitz E, Witkin SS; MAP Study Group, Relationship between a toll-like receptor-4 gene polymorphism, bacterial vaginosis-related flora and vaginal cytokine responses in pregnant women, *Eur J Obstet Gynecol Reprod Biol* 2004;116:152-6
 20. Mosesson MW, Amrani DL, The structure and biologic activities of plasma fibronectin. *Blood* 1980;56:145-58
 21. Potts JR, Campbell ID, Fibronectin structure and assembly, *Curr Opin Cell Biol* 1994;6:648-55
 22. Busk M, Pytela R, Sheppard D, Characterization of the Integrin $\alpha\beta 6$ as a Fibronectin-binding Protein. *J Biol Chem* 1992;267:5790-6
 23. Costerton JW, Ingram JM, Cheng KJ, Structure and function of the cell envelope of gram-negative bacteria. *Bacteriol Rev* 1974;38:87-110
 24. Vollmer W, Bertsche U, Murein (peptidoglycan) structure, architecture and biosynthesis in *Escherichia coli*. *Biochim Biophys Acta* 2008;1778:1714-34.
 25. Osborn MJ, Rosen SM, Rothfield L, Zeleznick LD, Horecker BL, Lipopolysaccharide of the Gram-negative Cell. *Wall Science* 1964;145:783-9
 26. Raetz CR, Reynolds CM, Trent MS, Bishop RE, Lipid A modification systems in gram-negative bacteria. *Annu Rev Biochem* 2007;76:295-329
 27. Shands JW, Localization of Somatic Antigen on Gram-Negative Bacteria by Electron Microscopy. *J Bacteriol* 1965;90:266-70
 28. Yeoman CJ, Yildirim S, Thomas SM, et all. Comparative genomics of *Gardnerella vaginalis* strains reveals substantial differences in metabolic and virulence potential. *PLoS One* 2010;5:12411
 29. Johnson AP, Davies HA, Demonstration by electron microscopy of pili on *Gardnerella vaginalis*. *Br J Vener Dis* 1984;60:396-72
 30. Beesley JE, Day SE, Betts MP, Thorley CM, Immunocytochemical labelling of *Bacteroides nodosus* pili using an immunogold technique. *J Gen Microbiol* 1984;130:1481-7
 31. Sauer FG, Mulvey MA, Schilling JD, Martinez JJ, Hultgren SJ, Bacterial pili: molecular mechanisms of pathogenesis. *Curr Opin Microbiol* 2000;3:65-7
 32. Scott TG, Curran B, Smyth CJ, Electron microscopy of adhesive interactions between *Gardnerella vaginalis* and vaginal epithelial cells, McCoy cells and human red blood cells. *J Gen Microbiol* 1989;135:475-80
 33. Kline KA, Fälker S, Dahlberg S, Normark S, Henriques-Normark B. Bacterial adhesins in host-microbe interactions. *Cell Host Microbe* 2009;5:580-92
 34. Kumar CG, Anand SK, Significance of microbial biofilms in food industry: a review. *Int J Food Microbiol* 1998;42:9-27
 35. Watnick P, Kolter R, Biofilm, city of microbes. *J Bacteriol* 2000;182:2675-9
 36. Mah TF, O'Toole GA, Mechanisms of biofilm resistance to antimicrobial agents. *Trends Microbiol* 2001;9: 34-9
 37. Davey ME, O'toole GA, Microbial biofilms: from ecology to molecular genetics. *Microbiol Mol Biol Rev* 2000;64: 847-67
 38. O'Toole G, Kaplan HB, Kolter R, Biofilm formation as microbial development. *Annu Rev Microbiol* 2000;54:49-79
 39. Swidsinski A, Mendling W, Loening-Baucke V, at all., An adherent *Gardnerella vaginalis* biofilm persists on the vaginal epithelium after standard therapy with oral metronidazole. *Am J Obstet Gynecol* 2008;198:97.e1-6